

Product Catalog

SLEE – Your partner in high precision and innovation

Tissue Processors
Embedding Centers
Microtomes
Cryostats
Water Bath &
Slide Warmer
Staining Systems
Cover Slipper
Cytocentrifuge

DESIGN AND MANUFACTURING
MADE IN GERMANY



*SLEE – Your partner in
high precision and innovation*



SLEE medical supplies a broad product range for equipping histo-pathological laboratories in routine and reasearch. Our products are used for the sample preparation of microscopic sample material.

More than 50 years of experience in development, production and sales of freezing microtomes, microtomes and histological equipment is guarantee of high product quality and the continuous success of SLEE medical.

The combination of flexibility and competence allows us to fulfill individual requests and custom-made solutions.

SLEE medical develops, produces and services its products at the SLEE headquarter in Mainz, Germany.

www.slee.de

SLEE medical GmbH

Content	Page
Tissue Processors	4
MTP	
MTM I/II	
Embedding Centers	8
MPS/P1	
MPS/P2	
Dispensing module MPS/P	
Prewarming unit MPS/W and MPS/WH	
Cooling plate MPS/C and MPS/CX	
Microtomes	14
CUT 4062	
CUT 5062	
CUT 6062	
Accessories	
Cryostats	24
MEV	
MNT	
Accessories	
Water Bath & Slide Warmer	28
slidetec WATER	
slidetec HEAT	
Staining Systems	30
MSM	
MAS	
Cover Slipper	34
MCS I	
MCS II	
Cytocentrifuge	36
CS Centrifuge I/II	
Service	38

Tissue Processors

- MTP · Robust carousel tissue processor
- MTM I/II · Vacuum tissue processor

Tissue Processors

Embedding Centers

Microtomes

Cryostats

Water Bath & Slide Warmer

Staining Systems

Cover Slipper

Cytocentrifuge



MTP

Robust carousel tissue processor

The MTP carousel tissue processor guarantees gentle and highly reliable specimen processing in conjunction with state of the art control features. The specimen throughput can be doubled to 240 cassettes per run with a second transport basket. For faster and substantially improved processing of tissue, the instrument can optionally be equipped with vacuum units for all paraffin beakers or all positions including reagent beakers. An integrated battery ensures highest process safety even in environments with frequent power failures.

- Easy loading and full process control by rotating table principle
- Integrated UPS system protects your samples
- Up to 240 cassettes per run
- System status monitor
- Password protection
- Intuitive control panel
- Delayed start function

Accessories

Fume hood for MTP / MSM (perspex)	#11000220
Aluminum reagent beaker	#11000229
Plastic reagent beaker	#11000251
Heated paraffin beaker (aluminum)	#11000252
Transport basket (stainless steel) incl. holder and lid	#11000253
Vacuum unit (paraffin) for units with two paraffin beakers	#11000223
Vacuum unit (paraffin) for unit with three paraffin beakers	#11000224
Vacuum unit (reagent & paraffin) for unit with two paraffin beakers	#11000225
Vacuum unit (reagent & paraffin) for unit with three paraffin beakers	#11000226
Remote alarm module	#11000271
Transport basket (stainless steel)	#11000256
Extension Twin basket for MTP	#11000221
Exhaust fan including carbon filter	#11000211
Exchange carbon filter	#11000254
Organizer cartridge	#11000255

Specifications

Dimensions (width x depth x height)	850 x 850 x 750 mm
Weight without accessories	70 kg
Reagent beakers	
Material	POM, white
Capacity	2000 ml
Heated paraffin beakers	
Material	Aluminum, anodized, double walled
Capacity	2000 ml
Transport basket	
Material	Stainless steel
Capacity	120 standard cassettes
Programming	20 programs Freely programmable
Electrical parameters	100 – 240 V, 50/60 Hz

Standard components

Basic instrument

10x Reagent breakers (POM, white)
2x Heated paraffin beakers (Aluminum)
1x Stainless steel transport basket
1x Organizer tray (stainless steel)
1x Labelling set for reagent beakers
Operation manual
Mains cable

MTM Vacuum tissue processor

Enhanced Flexibility in Tissue Processing

The SLEE vacuum tissue processor family MTM combines state of the art technology with comfortable handling and design. The MTM II fast tissue processor offers a cost-efficient and user-friendly alternative for the fast biopsies processing and the overnight batch tissue processing needs of every histology laboratory.



MTM I



MTM II

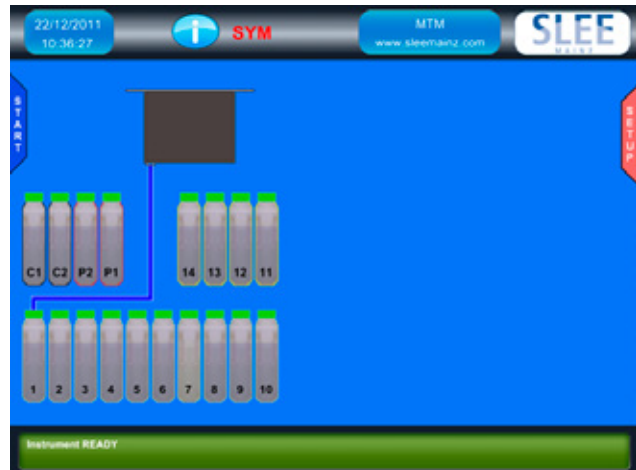
The innovative and patented enhanced heat exchanger (EHE) allows fastest non-microwave tissue processing today available.

The system can be operated with traditional reagents or with most of the xylene and ethyl alcohol substitute available on the market. A user-friendly reagent management system and an optimized cleaning cycle routine are the basis for higher cost efficiency and higher turn-over. Process safety is guaranteed with an intelligent remote alarm system that communicates via mobile or internet.

- Safe tissue processing with preheated reagents
- Fully automatic reagent management system
- Automatic cleaning cycles
- Intuitive control via 15" touch screen
- Charcoal filter supported ventilation
- Remote alarm system

Two Functionalities –One Instrument

Short Processing Time	High Sample Turnover
45 Minutes/Run Biopsy	300 Samples/Run Routine



Intuitive control via 15" touchscreen

Standard components	MTM I	MTM II
Basic instrument	■	■
Enhanced Heating Element (EHE)		■
15" Color-LCD-Screen	■	■
Cassette basket (stainless steel)	■	■
10x reagent container	■	■
4+1x paraffin container	■	■
2x cleaning solution container	■	■

Specifications	MTM I	MTM II
Sample Processing Chamber capacity	300 standard cassettes	
Sample Processing Chamber Temperature	RT to 65 °C	
Reagent containers	10 (2.5 litres each)	
Paraffin containers	4+1 (2.5 litres each)	
Dimensions (width x depth x height)	700 x 600 x 1300 mm	
Weight Without accessories	120 kg	135 kg
Electrical parameters	1000 W 100, 115 or 230 V, 50/60 Hz	1500 W 100, 115 or 230 V, 50/60 Hz

Accessories	MTM I & II
Cassette basket	#39600061
Holder for cassette basket	#39600062
Reagent container	#39600030
Refill Pack Active Carbon	#39600268
UPS 230 V - 1500 VA - 1200 W	#11000510
UPS 230 V - 1500 VA - 1760 W	#11000504
Remote alarm module	#11000270
Printer	#11000506

MTM I 230 V, 50/60 Hz Histology vacuum tissue processor	Art. No. #11000500
MTM II 230 V, 50/60 Hz Histology fast vacuum tissue processor	Art. No. #11000600
MTM I 115 V, 50/60 Hz Histology vacuum tissue processor	Art. No. #11000501
MTM II 115 V, 50/60 Hz Histology fast vacuum tissue processor	Art. No. #11000601

Embedding Centers

SLEE offers two ergonomic and reliable embedding centers for optimum workflow in smaller and routine laboratories. MPS/P1 is a compact system for reduced turnover requirements, MPS/P2 is a modular system for high-turnover routine applications.

- MPS/P1 · Basic paraffin embedding center for low turnover
- MPS/P2 · Modular paraffin embedding center for high turnover

Tissue Processors

Embedding Centers

Microtomes

Cryostats

Water Bath & Slide Warmer

Staining Systems

Cover Slipper

Cytocentrifuge



MPS/P1

Basic paraffin embedding centers

The space-saving MPS/P1 is a complete paraffin dispensing unit including a 3.3 litres paraffin container, a heated working area and a cooling spot. The ergonomically elevated heated working area is illuminated with adjustable LED light and allows comfortable processing of specimen. All functions of the unit are controlled by an intuitive control panel including programmable working hours. Two heated trays provide a pre-warming capacity of 80 cassettes and 200 embedding moulds.

- Manual lever and foot switch for paraffin dispenser
- Adjustable magnifier
- Ergonomic hand rest
- Spacious and heated paraffin collection tray
- 3.3 litres paraffin container
- Cooling spot
- Two heating trays for 80 cassettes and 200 embedding moulds.
- Ergonomic working height
- Working area with LED light
- Intuitive control panel
- Electrically heated forceps (optional)

Standard Components

Heated paraffin (wax) container
Heated dispenser element
Heated cassette/mould storage containers
Heated working area
Cooling spot
Magnifying glass, adjustable
Paraffin collection tray
Working area illumination (LED)
Operation manual

Specifications

Paraffin container	3.3 litres
Heated cassette/ mold container Processing	Approx. 80 cassettes Approx. 200 moulds 30 – 80 °C programmable
Dimensions (width x depth x height)	450 x 570 x 290 mm
Weight without accessories	23 kg

MPS/P1 230 V, 50/60 Hz

Art. No. #10190000

MPS/P1 115 V, 50/60 Hz

Art. No. #10192000



MPS/P2

Modular paraffin embedding center

The MPS/P2 features ease of operation, spacious working area, large container capacity and reliability. All modules operate at the same working height and can be arranged according to laboratory requirements. The extendable modular 3-component system with separate temperature control elements consists of a dispensing element MPS/P, a preheating unit MPS/W and a separate cooling plate MPS/C.

- Spacious cooling plate
- Adjustable magnifier
- Ergonomic hand rest
- Programmable working hours
- Easily adjustable forceps holders
- 5 litres paraffin container
- Spacious and heated paraffin collection tray
- Working area with adjustable LED-illumination and integrated cold spot
- Electrically heated forceps (optional)

MPS/P2 230V 50/60 Hz

Art. No. #10185000

MPS/P2 115V 50/60 Hz

Art. No. #10187000

Standard components

Dispensing module MPS/P

Prewarming unit MPS/W or MPS/WH

Cooling unit MPS/C

Foot switch for paraffin dispenser

Forceps holder

2x forceps (1x blunt, 1x pointed)

Cleaning spatula black

Base moulds 7 x 7 x 7 mm, 12 pcs., stainless steel

Base moulds 24 x 24 x 7 mm, 12 pcs., stainless steel

Mains cable

Operation manual



MPS/P

Dispensing module

Accessories

Electrically heated forceps (2.5 mm)	#10196000
Electrically heated forceps (1.25 mm)	#10196001
Base moulds (stainless steel) 7 mm x 7 mm x 7 mm (12 pcs.)	#30030050
Base moulds (stainless steel) 30 mm x 24 mm x 7 mm (12 pcs.)	#30030051
Base moulds (stainless steel) 15 mm x 15 mm x 7 mm (12 pcs.)	#30030052
Base moulds (stainless steel) 24 mm x 24 mm x 7 mm (12 pcs.)	#30030053
Base moulds (stainless steel) 37 mm x 24 mm x 7 mm (12 pcs.)	#30030054
Base moulds (stainless steel) 33 mm x 24 mm x 12 mm (6 pcs.)	#30030056
Paraffin (54–56 °C) (20 kg bag)	#30010002

Specifications

Temperature range	up to 80 °C (1 °C increments) for paraffin container up to 70 °C (1 °C increments) for working area down to -10 °C for cooling spot
Capacity	5 l paraffin
Cooling spot	50 x 50 mm, peltier
Forceps holders	2 x 4 adjustable (magnetic)
Illumination	3 LED spots fixed + 3 LED spots adjustable
Magnifier	included, easy to orientate
Paraffin flow	activation manually or by footswitch continuously adjustable flow rate
Control	microprocessor, programming of temperature, working day, working time, time, date
Work area	450 x 240 mm
Dimensions (width x depth x height)	450 x 570 x 295 mm
Weight	21 kg
Electrical parameters	115 or 230 V, 50/60 Hz
Consumption	P _{max} : 380 W
Temperature	18–35 °C, air conditioned room recommended
Humidity	< 60 %

MPS/P 230V 50/60 Hz

Art. No. #10170000

MPS/P 115V 50/60 Hz

Art. No. #10172000



MPS/W



MPS/WH

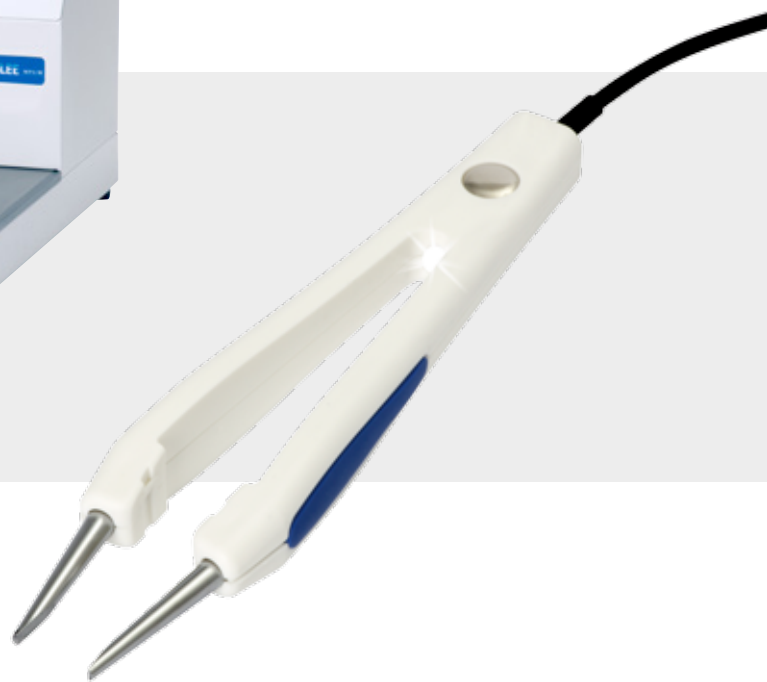
MPS/W and MPS/WH

Prewarming unit

Specifications

Temperature range	up to 80 °C (1 °C increments) for working area
Cassette bath	Capacity 150 cassettes, removable MPS/W 250 x 260 x 32 mm MPS/WH 250 x 260 x 48 mm
Control	microprocessor, programming of temperature, working day, working time, time, date
Mold warmer	Capacity 500 molds 260 x 220 x 71 mm
Dimensions (width x depth x height)	300 x 570 x 295 mm
Weight	15 kg
Power	230 V, 50/60 Hz
Consumption	P _{max} : 320 W
Temperature	18–35 °C, air conditioned room recommended
Humidity	< 60 %

MPS/W 230V 50/60 Hz	Art. No. #10180000
MPS/W 115V 50/60 Hz	Art. No. #10182000
MPS/WH 230V 50/60 Hz	Art. No. #10180001
MPS/WH 115V 50/60 Hz	Art. No. #10182001



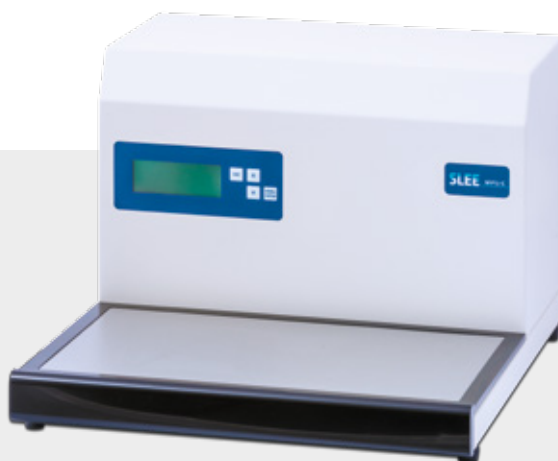
Electrically Heated Forceps

- Electrically Heated Forceps
- Ergonomic Design
- Highly precise temperature control
- Hygienic chromium plating
- Integrated LED Light for optimum illumination of work space
- Integrated connection in MPS/P1 and MPS/P

Specifications

Temperature range	60 °C ± 2°C
Tip material	brass, hygienic chromium plating
Tip width	2.5 mm (Art. No. #10196000) 1.25 mm (Art. No. #10196001)
Illumination	LED, integrated
Weight	120 g
Power	24 V
Consumption PN	2 W

Electrically heated forceps (2.5 mm)	Art. No. #10196000
Electrically heated forceps (1.25 mm)	Art. No. #10196001
Heated forceps (2.5 mm) incl. power supply	Art. No. #10196010
Heated forceps (1.25 mm) incl. power supply	Art. No. #10196011



MPS/C and MPS/CX

Cooling unit

Specifications

Temperature range	min. -15 °C (1 °C increments)
Max. capacity	MPS/C 50 to 80 cassettes MPS/CX 75 to 120 cassettes
Control	microprocessor, programming of temperature, working day, working time, time, date
Work area	MPS/C 370 x 270 mm MPS/CX 570 x 270 mm
Dimensions (width x depth x height)	MPS/C 400 x 570 x 295 mm MPS/CX 600 x 570 x 295 mm
Weight	MPS/C 25 kg MPS/CX 36 kg
Electrical parameters	115 or 230 V, 50/60 Hz

Consumption	MPS/C Pmax: 150 W MPS/CX Pmax: 450 W
Temperature	18 – 35 °C, air conditioned room
Humidity	< 60 %

Accessories

Hood for coolplate MPS/C (perspex)	#10175100
---	-----------



Cold plate MPS/C with hood

MPS/C 230 V, 50/60 Hz	Art. No. #10175000
MPS/C 115 V, 60 Hz	Art. No. #10177000
MPS/CX 230 V, 50/60 Hz	Art. No. #10175020
MPS/CX 115 V, 60 Hz	Art. No. #10177020

Rotary Microtomes

All SLEE microtomes are produced at the company's seat in Mainz, Germany. The highly precise, modularly built rotary microtomes range from a manual unit, type CUT 4062, via the semi-automatic type CUT 5062 to the fully-automatic CUT 6062.

All microtomes are equipped with maintenance-free caged roller bearing guide ways and micrometer feed mechanism to provide highest stability and precision. A huge variety of accessories leaves the choice to customize your equipment and allows the use for any type of material or specimen in medical research, routine diagnostics or industrial applications.

[Tissue Processors](#)

[Embedding Centers](#)

[Microtomes](#)

[Cryostats](#)

[Water Bath & Slide Warmer](#)

[Staining Systems](#)

[Cover Slipper](#)

[Cytocentrifuge](#)

Overview



CUT 4062	CUT 5062	CUT 6062
Art. No. 10065000	Art. No. 10070001	Art. No. 10080001
Manual precision microtome	Semi-automatic precision microtome	Fully automatic precision microtome
Exchangeable standard knife or disposable blade holder	Exchangeable standard knife or disposable blade holder	Exchangeable standard knife or disposable blade holder
Trimming function in 4 steps 10; 20; 30; 40 µm	Motor trimming function, 0 – 750 µm	Motor trimming function, 0 – 750 µm
Ergonomically located coarse feed wheel		Motorized sectioning (section window / variably adjustable cutting speeds)
Object orientation	Object orientation	Object orientation
Acoustic signal at end positions	2 Specimen feed memory positions	2 Specimen feed memory positions
Automatic retraction	Automatic motor retraction	Automatic motor retraction
Options		
Section counter, universal cassette clamp, standard object clamp (up to 50 x 50 mm), foil clamp, prism set	Universal cassette clamp, standard object clamp (up to 50 x 50 mm), foil clamp, prism set	Universal cassette clamp, standard object clamp (up to 50 x 50 mm), foil clamp, prism set
Specifications		
610 D x 480 W x 350 H	610 D x 480 W x 350 H	610 D x 480 W x 350 H
33 kg	33 kg	34 kg
Cutting thickness 0.5 – 60 µm	Cutting thickness 0.5 – 100 µm	Cutting thickness 0.5 – 100 µm
Horizontal advance 28 mm	Horizontal advance 28 mm	Horizontal advance 28 mm
Vertical stroke 60 mm	Vertical stroke 60 mm	Vertical stroke 60 mm
		Cutting speed variable 3 – 450 mm/s
Specimen orientation x/y axis: 8° z axis: 360°	Specimen orientation x/y axis: 8° z axis: 360°	Specimen orientation x/y axis: 8° z axis: 360°



CUT 4062

Manual precision microtome

The new SLEE CUT 4062 is a manual rotary microtome designed for paraffin sections and research-, plastic- and industrial applications.

- High precision specimen feed
- Smoothly running hand wheel
- Hand wheel lock in each position
- Trimming function in 4 steps (10, 20, 30, 40 μm)
- Specimen retraction upon backstroke
- Acoustic signal for end position of specimen movement
- Vibration free microtome base plate
- Ergonomically located coarse feed wheel
- Spacious, integrated section waste tray
- Wide range of accessories

CUT 4062

Art. No. #10065000



CUT 5062

Semi-automatic precision microtome

The SLEE CUT 5062 is a semi-automated rotary microtome designed for paraffin sections and research-, plastic- and industrial applications. The modular design allows custom-made assemblies from a huge range of accessories.

- Motorized trimming up to 750 μ m, programmable
- Motorized advance (2 speeds) / return of specimen
- 2 Specimen feed memory positions
- Specimen size up to 50 x 50 mm with standard object clamp or standard cassette size for universal cassette clamp
- Intuitive control panel
- Variable retraction
- Section counter (Stroke / Distance)
- Spacious, integrated section waste tray
- Wide range of accessories

CUT 5062 100 – 240 V, 50/60 Hz

Art. No. #10070001



CUT 6062

Fully automatic precision microtome

The SLEE CUT 6062 is a fully automated rotary microtome designed for paraffin sections and research-, plastic- and industrial applications. The modular design allows custom-made assemblies from a huge range of accessories.

- Motorized trimming up to 750 µm, programmable
- Motorized advance (2 speeds) / return of specimen
- 2 Specimen feed memory positions
- High efficient motorized sectioning (section window / variably adjustable cutting speeds)
- Variable retraction
- Intuitive control panel
- Section counter (Stroke / Distance)
- Specimen size up to 50 x 50 mm with standard object clamp or standard cassette size for universal cassette clamp
- Spacious, integrated section waste tray
- Wide range of accessories

CUT 6062 100 – 240 V, 50/60 Hz

Art. No. #10080001

Specifications

Section thickness setting range	CUT 4062 0.5 – 60 µm CUT 5062/CUT 6062 0.5 – 100 µm
Section thickness selection	CUT 4062 0.5 – 2 µm in 0.5-µm steps 2 – 10 µm in 1-µm steps 10 – 60 µm in 2-µm steps CUT 5062/CUT 6062 0.5 – 2 µm in 0.5-µm steps 2 – 20 µm in 1-µm steps 20 – 50 µm in 2-µm steps 50 – 100 µm in 5-µm steps
Trimming thickness	CUT 4062 10 µm, 20 µm, 30 µm, 40 µm CUT 5062/CUT 6062 0.5 – 750 µm
Specimen feed	CUT 4062 28 mm (via coarse feed wheel) CUT 5062/CUT 6062 28 mm (step motor) 75 / 150 / 300 / 600 & 3000 µm/s
Specimen feed memory	CUT 5062/CUT 6062 2 positions programmable
Vertical specimen stroke	60 mm
Sectioning speed	CUT 6062 3 – 450 mm/s, selectable via slider
Section window	CUT 6062 4 sizes selectable
Specimen retraction	CUT 4062 automatic On return stroke CUT 5062/CUT 6062 0 – 200 µm, selectable
Specimen orientation, horizontal	8°
Specimen orientation, vertical	8°
Specimen orientation, z-axis	360°
Section counter	CUT 4062 Strokes (optional) CUT 5062/CUT 6062 Strokes / Distance
Dimensions (width x depth x height)	480 x 610 x 350 mm incl. handwheel and waste tray
Weight without accessories	CUT 4062/CUT 5062 33 kg CUT 6062 34 kg

Standard components

	CUT 4062	CUT 5062	CUT 6062
Basic instrument	■	■	■
Object orientation	■	■	■
Universal cassette clamp, with orientation or standard object clamp	■	■	■
3-component disposable blade holder (low and high profile blades) or standard knife holder	■	■	■
Waste tray	■	■	■
Disposable blade (low profile; 50pcs.)	■	■	■
Foot switch for motor drive			■
Operation Manual	■	■	■
Dust cover	■	■	■

Accessories

External control panel CUT 5062	#10090050
External control panel CUT 6062	#10090051
Foot control element CUT 5062 / CUT 6062	#10090052
Magnifier with illumination	#10090060
3-component disposable blade holder (tungsten carbide blades)	#10090041
Standard Object clamp, fixed	#10090007
Standard Object clamp (MTR), fixed	#10090026
Super-Mega-Cassette Clamp, fixed	#10090021
Super-Mega-Cassette Clamp, orientable	#10090027
Foil clamp	#10090025
Section counter for CUT 4062 (installed)	#10090020
Dissection needle	#30030095
Prism (Set)	#10090017
Disposable blade (low profile; 50 pcs)	#28407000
Disposable blade (high profile; 50 pcs)	#28408000
Tungsten carbide blades (1 pcs.)	#28406000
Microtome knife, Profile: C or D, Length: 10 to 20 cm	



CUT

External control panel

- **Intuitive Use** of panel due to identical button design and layout
- **Safe Workflow** allows control of microtome functions at distance from blade and moving parts
- **Ergonomic Design** ensures fatigue free working
- Free Placement for **right and left handed use** of fully motorized microtome versions

3-component-disposable-blade-holder

- **High Precision** lateral adjustment of blade ensures that the entire width of the blade edge can be used
- **Extra Safety** finger protection guard engaged throughout processing (exchange of blade, lateral displacement, trimming, cutting)
- **Multiple Functionality** allows use of low and high profile disposable blades with the same holder
- **Easy Operation** for blade changing by special release mechanics and cutting angle setting by separate middlepiece
- **Durable Designed** blade clamping system
- **Hygienic Levers** made of high-grade steel

External control panel CUT 5062

Art. No. #10090050

External control panel CUT 6062

Art. No. #10090051

3-component-disposable-blade-holder

Art. No. #10090040



Magnifier with Illumination

When miniature samples need to be precisely processed, attention to detail is vital. The illuminated magnifier directly mounted to the microtome basis is the perfect accessory to meet these requirements.

- Rotatable and adjustable through metal flexible tube
- Lens (Dimensions Ø 72 mm lens; diopters: 6)
- Light source: 63x light-emitting diode (LED), neutral white, dimmer
- Electrical parameters: 100 – 240 V; 50/60 Hz



Magnifier with illumination

Art. No. #10090060

MTR Bench top quickfreezing unit

The fast cooling unit consists of a compressor cooling system with a flexible tube and a cooling block which can be adapted onto a standard object clamp of different kinds of microtomes.

- Extremely silent due to special valves
- Self optimizing controller for temperature accuracy
- Manual defrost
- High cooling capacity to -45°C

Specifications

Dimensions (width x depth x height)	410 x 485 x 310 mm
Weight	28 kg
Cooling capacity	-45 °C

MTR 230V, 50/60 Hz

Art. No. #10110000

MTR 115V, 50/60 Hz

Art. No. #11000002

Cryostats

SLEE medical has more than 50 years of experience in the development, production and sales of cryostats. The application of these precision instruments is for the specimen preparation in histology and pathology as well as in industrial fields of quality assurance and material research. Already with the development of the worldwide first cryostat SLEE has achieved an excellent reputation and since then has continuously expanded a leading market position.

The cryostats produced by SLEE medical offer best ergonomic features and efficiency: The compact bench-top cryostat type MTC as well as the floor-standing units MEV and MNT comprise a spacious cooling chamber with easy-to-operate electronic control and automatic defrost function. The heart of all these units is the precise rotary microtome with well-proven SLEE quality.



Tissue Processors

Embedding Centers

Microtomes

Cryostats

Water Bath & Slide Warmer

Staining Systems

Cover Slipper

Cytocentrifuge

Overview



MEV	MNT
Art. No. 10150000	Art. No. 10160000
Floorstanding ECO-cryostat	Floorstanding high-end-cryostat
Exchangeable standard knife or disposable blade holder	Exchangeable standard knife or disposable blade holder
Motor trimming function, 0 – 300 µm	Motor trimming function, 0 – 300 µm
Motor coarse advance in 2 speeds	Variable cutting speed
Object orientation	Object orientation
Actively cooled 24 position specimen storage	Actively cooled 24 position specimen storage
Power saving mode	Power saving mode
Automatic motor retraction	Automatic motor retraction
Options	
UV-C disinfection, 2 peltier driven quick freeze positions (-55°C), specimen cooling (-45°C)	UV-C disinfection, 2 peltier driven quick freeze positions (-55 °C), specimen cooling (-45 °C),
Specifications	
760 D x 680 W x 1110 H	760 D x 750 W x 1110 H
127 kg	154 kg
Cutting thickness 0.5 – 100 µm	Cutting thickness 0.5 – 100 µm
Trimming thickness variable 0.5 – 300 µm	Trimming thickness variable 0.5 – 300 µm
Horizontal advance 28 mm	Horizontal advance 28 mm
Vertical stroke 58 mm	Vertical stroke 58 mm
	Cutting speed variable 0.5 – 300 mm/sec
Specimen orientation x/y axis: 8° z axis: 360°	Specimen orientation x/y axis: 8° z axis: 360°
Specimen holders 22 and 35 mm Ø with grip protection	Specimen holders 22 and 35 mm Ø with grip protection
Cooling capacity -35 °C	Cooling capacity -35 °C



MEV

Floorstanding ECO cryostat

The model MEV features convenient operation and a modern rotary microtome. The space-saving design still has a large stainless steel chamber, an effective freeze bar with 24 positions and a chamber temperature to -35 °C.

- Modern rotary microtome with motorized μm advance/return
- Large anti-roll plate
- Heated viewing window (glass, electrically, conductive coating, transparent)
- Intuitive electronic control panel
- Automatic defrost
- 2x Shock freezing positions (optional)
- UV-C disinfection (optional)
- Object cooling (optional)
- Storage area for 24 specimen holders

Standard Components*

Basic instrument

Semi-automatic rotary microtome

Anti-roll plate, ready to use

Object holders
(5x Ø 22 mm; 5x Ø 35 mm)

1x Heat extractor

1x Rack for object holders (stainless steel)

Brush

1 Box of disposable blades (50 pcs.)
or 1 steel knife (16 cm C-profile)

1x CryoGlue embedding medium (1x 125 ml)

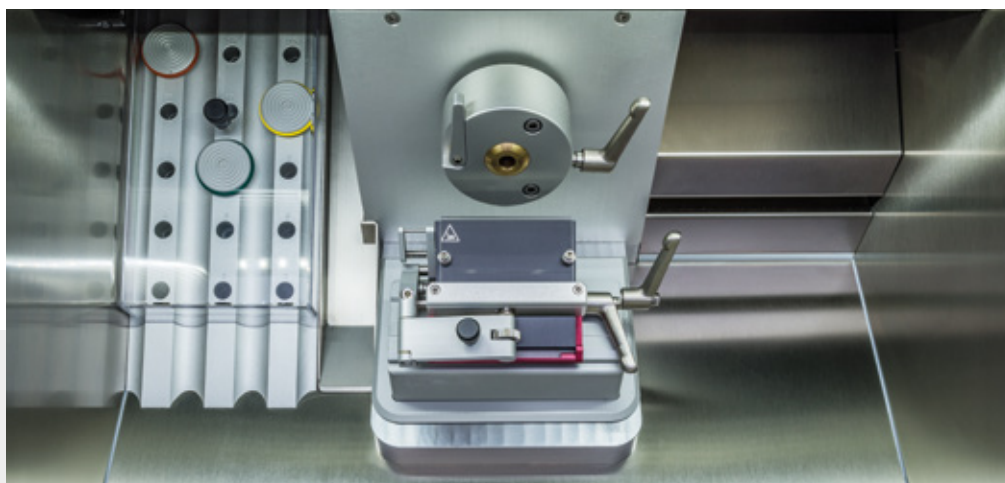
1x Bottle cryostat low temperature oil

Set of allen keys

Operation manual

Mains cable

* Either standard knife holder or disposable blade holder is included in standard components



MEV Cooling chamber with semi-automatic rotary microtome

Specifications

Cryochamber temperature	0 °C to -35 °C
Section thickness setting range	0.5 – 100 µm
Section thickness selection	0.5 – 2 µm in 0.5-µm steps 2 – 20 µm in 1-µm steps 20 – 50 µm in 2-µm steps 50 – 100 µm in 5 µm steps
Trimming thickness	0.5 – 300 µm, freely programmable
Horizontal specimen advance	28 mm
Vertical specimen stroke	58 mm
Specimen retraction	0 – 200 µm; selectable on return stroke
Specimen orientation, horizontal	8°
Specimen orientation, vertical	8°
Specimen orientation, z-axis	360°
Dimensions (width x depth x height)	750 x 760 x 1110 mm
Weight without accessories	154 kg

Accessories

Standard knife holder*	#10156010
Disposable blade holder (low profile)*	#10157005
Disposable blade holder (high profile)*	#10158005
2x Quick freezing positions	#10159000
UV-C surface disinfection	#10169000
Object cooling 230 V, 50/60 Hz	#10164000
Object cooling 115 V, 50/60 Hz	#10164200
Debris extraction system	#10167000
Section waste cloth	#30000015
Object holder (Ø 22 mm; 5 pcs.)	#30000002
Object holder (Ø 28 mm; 5 pcs.)	#30000017
Object holder (Ø 35 mm; 5 pcs.)	#30000000
Object holder (Ø 50 mm; 5 pcs.)	#30000003
Rack for object holders (stainless steel)	#31000769
Cork plate (100 pcs; Ø 20 mm)	#30001001
CryoGlue embedding medium (4x 125 ml)	#30001100
Clear-cut brush	#30001030
Anti-roll plate (disposable blade holder)	#32001050
Anti-roll plate (standard knife holder)	#32001049
Disposable blade (low profile; 50 pcs)	#28407000
Disposable blade (high profile; 50 pcs)	#28408000
Freezing spray (173 g)	#30001010

* Either standard knife holder or disposable blade holder is included in standard components

MEV 230 V, 50/60 Hz	Art. No. #10150000
MEV 115 V, 60 Hz	Art. No. #10153000



MNT

Floorstanding High-End cryostat

The MNT high-end cryostat is designed for histology/ pathology and research applications. The instrument is equipped with a fully automatic rotary microtome with extremely high mechanical stability, tolerance-free roller guides and state of the art electronic control.

- Modern rotary microtome with motorized μm advance/return
- Cutting motor with adjustable speed
- Large anti-roll plate
- Heated viewing window (glass, electrically conductive coating, transparent)
- Intuitive control panel
- Automatic defrost
- Storage area for 24 specimen holders
- 2x Shock freezing positions (optional)
- UV-C disinfection (optional)
- Object cooling (optional)

Standard Components

Basic instrument

Semi-automatic rotary microtome

Anti-roll plate, ready to use

Object holders
(5x \varnothing 22 mm; 5x \varnothing 35 mm)

1x Heat extractor

1x Rack for object holders (stainless steel)

Brush

1 Box of disposable blades (50 pcs.)
or 1 steel knife (16 cm C-profile)

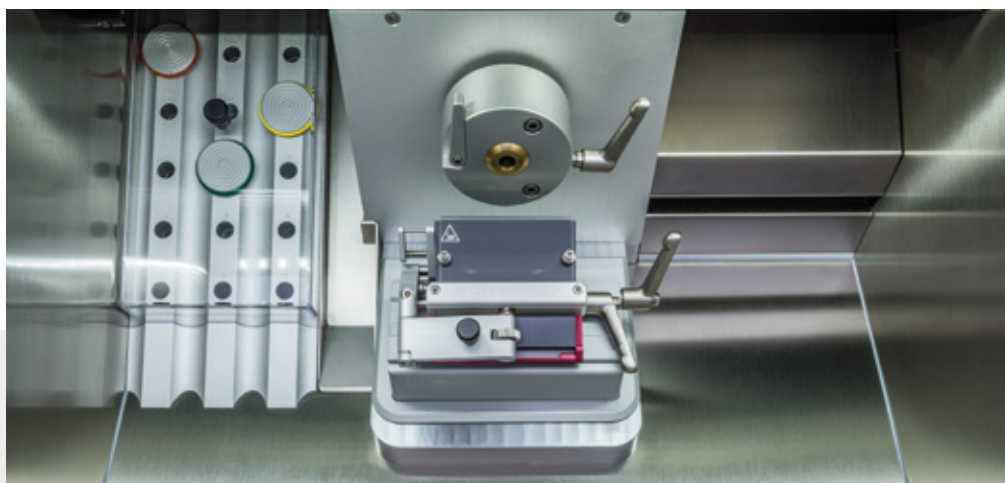
1x CryoGlue embedding medium (1x 125 ml)

1x Bottle cryostat low temperature oil

Set of allen keys

Operation manual

Mains cable



MNT Cooling chamber with fully automatic rotary microtome

Specifications

Cryochamber temperature	0 °C to -35 °C
Section thickness setting range	0.5 – 100 µm
Section thickness selection	0.5 – 2 µm in 0.5-µm steps 2 – 20 µm in 1-µm steps 20 – 50 µm in 2-µm steps 50 – 100 µm in 5-µm steps
Trimming thickness	0.5 – 300 µm, freely programmable
Horizontal specimen advance	28 mm
Vertical specimen stroke	58 mm
Sectioning speed	20 – 300 mm/s, selectable
Specimen retraction	0 – 200 µm; selectable on return stroke
Specimen orientation, horizontal	8°
Specimen orientation, vertical	8°
Specimen orientation, z-axis	360°
Dimensions (width x depth x height)	750 x 760 x 1110 mm
Weight without accessories	154 kg

Accessories

Standard knife holder	#10156010
Disposable blade holder (low profile)	#10157005
Disposable blade holder (high profile)	#10158005
2x Quick freezing positions	#10159000
UV-C surface disinfection	#10169000
Object cooling 230 V, 50/60 Hz	#10164000
Object cooling 115 V, 50/60 Hz	#10164200
Debris extraction system	#10167000
Section waste cloth	#30000015
Object holder (Ø 22 mm; 5 pcs.)	#30000002
Object holder (Ø 28 mm; 5 pcs.)	#30000017
Object holder (Ø 35 mm; 5 pcs.)	#30000000
Object holder (Ø 50 mm; 5 pcs.)	#30000003
Rack for object holders (stainless steel)	#31000769
Cork plate (100 pcs; Ø 20 mm)	#30001001
CryoGlue embedding medium (4x 125 ml)	#30001100
Clear-cut brush	#30001030
Anti-roll plate (disposable blade holder)	#32001050
Anti-roll plate (standard knife holder)	#32001049
Disposable blade (low profile; 50 pcs.)	#28407000
Disposable blade (high profile; 50 pcs.)	#28408000
Freezing spray (173 g)	#30001010

MNT 230 V, 50/60 Hz	Art. No. #10160000
MNT 115 V, 60 Hz	Art. No. #10162000

Water Bath & Slide Warmer

■ slidetec WATER/HEAT

Water bath & Slide warmer

■ slidetec HEAT

Slide warmer

■ slidetec WATER

Water bath



Tissue Processors

Embedding Centers

Microtomes

Cryostats

Water Bath & Slide Warmer

Staining Systems

Cover Slipper

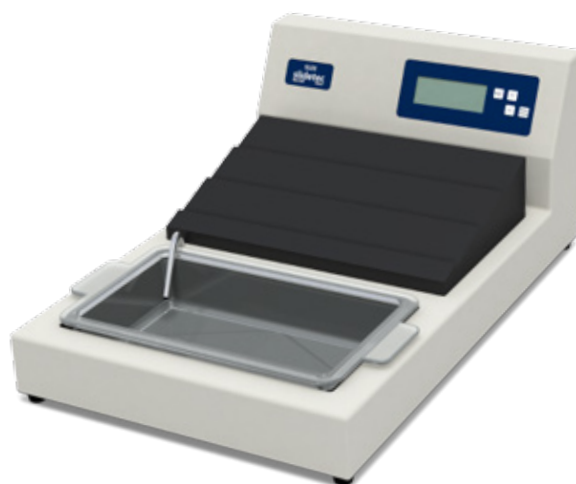
Cytocentrifuge

slidetec

WATER/HEAT

The SLEE waterbath and slide warmer combination slidetec WATER/HEAT is designed for stretching of paraffin sections and subsequently drying and baking these on microslides. It combines functional design with safety and ergonomic features that improve process reliability and convenient use. With slidetec HEAT and slidetec WATER also the single units are available.

- **EASY WORK** Ergonomic oriented and spacious drying area for slides
- **EASY VIEW** Integrated water bath illumination
- **EASY CLEAN** Separable glass water bath
- **EASY SAFE** Overheat protection
- **EASY PRECISION** Microprocessor thermostat control
- **EASY EFFICIENCY** Programmable Working hours



Specifications

Capacity water bath	2 litres
Capacity slide warmer	30 slides
Dimension (width x depth x height)	370 x 560 x 230 mm
Weight	18 kg
Temperature range	RT to 60 °C
Electrical parameters	115 or 240 V; 50/60 Hz
Consumption	600 W

slidetec WATER/HEAT 230 V, 50/60 Hz Art. No. #13000500

slidetec WATER/HEAT 115 V, 50/60 Hz Art. No. #13000501



slidetec

WATER

Specifications

Capacity water bath	2 litres
Dimension (width x depth x height)	350 x 370 x 230 mm
Weight	10 kg
Temperature range	RT to 60 °C
Electrical parameters	115 or 240 V; 50/60 Hz
Consumption	300 W

slidetec WATER 230 V, 50/60 Hz Art. No. #13000520

slidetec WATER 115 V, 50/60 Hz Art. No. #13000521



slidetec

HEAT

Specifications

Capacity slide warmer	30 slides
Dimension (width x depth x height)	350 x 370 x 230 mm
Weight	15 kg
Temperature range	RT to 60 °C
Electrical parameters	115 or 240 V; 50/60 Hz
Consumption	300 W

slidetec HEAT 230 V, 50/60 Hz Art. No. #13000510

slidetec HEAT 115 V, 50/60 Hz Art. No. #13000511

Staining Systems

- MSM · Robust carousel tissue stainer
- MAS · Robot multistainer

Tissue Processors

Embedding Centers

Microtomes

Cryostats

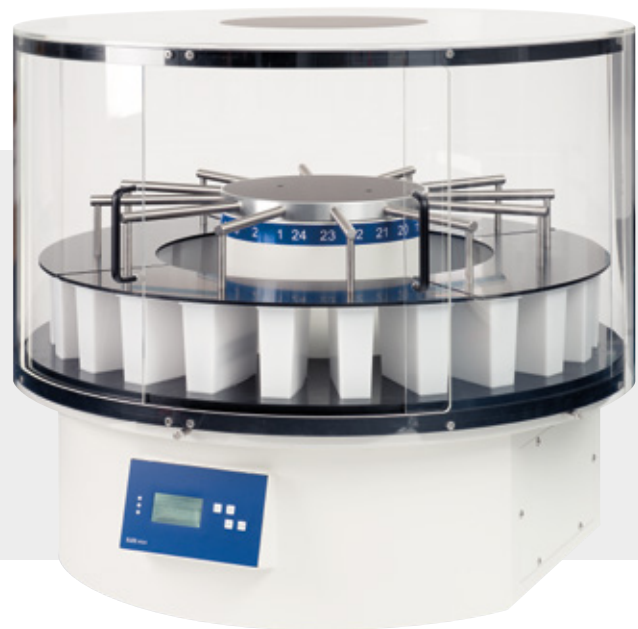
Water Bath & Slide Warmer

Staining Systems

Cover Slipper

Cytocentrifuge





MSM

Robust carousel tissue stainer

The MSM carousel stainer is designed to meet the basic requirements for routine staining in histology and cytology laboratories. The instrument is equipped with 24 incubation stations that contain up to 400 ml. The Flex-programming option allows different protocols while utilizing the same reagents. An integrated battery ensures highest process safety even in environments with frequent power failures. Hazardous fumes are efficiently eliminated by a fume extraction system thereby increasing user safety.

- Easy loading and full process control by rotating table principle
- Integrated UPS system protects your samples
- ^{FLEX}Programming
- System status monitor
- Password protection
- Intuitive control panel

Specifications

Staining cuvettes

Material	plastic
Dimensions (width x depth x height)	130 x 40 x 135 mm
Capacity	400 ml

Transport basket

Material	plastic
Capacity	30 standard size micro slides

Programming

20 staining programs,
freely programmable

Dimensions

(width x depth x height) 870 x 870 x 750 mm

Weight

without accessories 80 kg

Electrical parameters

100 – 240 V, 50/60 Hz

Standard components

Basic instrument

24x staining cuvette (plastic)

1x transport basket (plastic)

Capacity of 30 standard size micro slides

Operation manual

Mains cable

Accessories

Perspex hood	#11000220
Staining cuvettes	#12000260
Slide holder (30 slides)	#38500051
Twin option	#12000221
Drying station	#12000256
Exhaust fan	#11000210
Exhaust fan including carbon filter	#11000211
Exchange carbon filter	#39500011

MSM/24 100 – 240 V, 50/60 Hz

Art. No. #12000205



MAS

Automated tissue stainer

The tissue stainer MAS combines flexibility with speed and opens new dimensions in the field of automation. It is possible to work with different staining protocols at the same time due to the large number of 44 stations. The instrument can process up to 12 baskets containing 30 slides each. Programming and process control is via colored LCD display. Its unique Reagent Management System (RMS) ensures high quality samples and helps reducing consumption and costs. User safety and comfort is ensured by a highly efficient integrated exhaust system including carbon filter.

- 4 loading stations
- 4 unloading stations
- 6 water baths for rinsing water
- 30 staining stations with agitation
- Optional 2 drying stations (in combination with 4 waterbaths)
- Active carbon filter or the tubing for exhaust system
- Universal power input 100 – 240 V, 50/60 Hz



Standard components	MAS	MAS with conveyer to MCS I	MAS with drying stations	MAS with conveyer to MCS I and drying stations
Basic instrument	■	■	■	■
Operation manual	■	■	■	■
4x loading station	■	■	■	■
4x unloading station	■	■	■	■
30x staining cuvette (360 ml)	■	■	■	■
6x washing cuvette	■	■		
4x washing cuvette			■	■
2x drying station			■	■
4 x slide holder (30 slides)	■	■	■	■
Carbon filter	■	■	■	■
Mains cable	■	■	■	■
Conveyer system to coverslipper MCS I		■		■

Specifications	
Max. number of program steps	40
Incubation time for each station	1 sec. to 59 min.
Drip collection	adjustable drain time from 0 to 9 sec. patented drip collection technology
Stations, total including:	44 4 loading stations 4 unloading stations 30 incubation stations with agitation 6 wash stations for running water
optional:	2 drying stations (temperature adjustable from +40 °C to +90 °C) with 4 wash stations
Dimensions (width x depth x height)	1210 x 670 x 640 mm
Weight without accessories	115 kg
Electrical parameters	100 – 240 V, 50/60 Hz, 100 VA

MAS	Art. No. #14000500
MAS with drying station 230V, 50 / 60 Hz	Art. No. #14000502
MAS with conveyer system for coverslipper MCS I	Art. No. #14000600
MAS with conveyer system for coverslipper MCS I and drying station 230V, 50 / 60 Hz	Art. No. #14000504

Cover Slipper

■ MCS I & II · Automated Coverslipper

SLEE
MAINZ

mcs



Tissue Processors

Embedding Centers

Microtomes

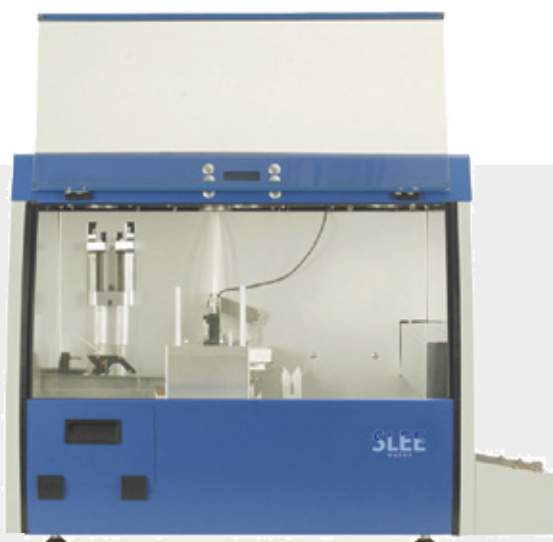
Cryostats

Water Bath & Slide Warmer

Staining Systems

Cover Slipper

Cytocentrifuge



MCS I & II

Automated Coverslipper

The innovative cover slipping technology allows an increased turnover and high reproducibility. The MCS coverslippers work with highest quality standards, cover slipping is done for each single glass separately fast and without bubbles. This method guarantees a reliable throughput. The cover slipper MCS I can be directly connected to the stainer MAS. The modular design simplifies the step of manual hand over of the sample holders to full automation – also in times of small budgets. The combination uses a minimum of space.

The cover slipper MCS II offers a high turnover of up to 400 slides per hour regulated by a 7-step speed control. The system is applicable to microslide racks of different automated staining systems and can easily be integrated into the work flow of a routine laboratory.

Standard components	MCS I	MCS II
Basic instrument	■	■
Operation manual	■	■
8x slide holder (30 slides)	■	■
2x cover glass holder (50 and 60 mm)	■	■
2x carbon filter	■	■
1x embedding medium Pertex (bottle, 50 ml)	■	■
Mains cable	■	■

Specifications	MCS I	MCS II
Processing speed	300 – 500 slides/h	400 slides/h
Dispensing volume	30 – 150 µl	40 – 200 µl
Dimensions (width x depth x height)	630 x 670 x 640 mm	500 x 550 x 680 mm
Weight without accessories	65 kg	65 kg
Electrical parameters	100 – 240 V 50/60 Hz 500 VA	110 – 240 V 50/60 Hz 460 VA

MCS I

Art. No. #14000000

MCS II

Art. No. #14000100



CS Centrifuge

Cytocentrifuge

CS Centrifuge is a cost-efficient alternative for monolayer cell preparation allowing for consistent performance and ease of use. The system is equipped with an open or closed rotor for up to 12 loading positions which can easily be removed for outside loading. Single or double sample chambers are available as disposable or reusable after suitable cleaning. For flexible use of the system a variety of sediment rotors are available on request.

Flexible choice and handling of rotors

- Cytocentrifugation open or closed (12 loading positions)
- Easily removable rotor for outside loading
- Wide variety of rotors available (sediment, cytocentrifuge)

Competitively priced consumables

- Single and double cytologyfunnels (reusable or disposable)
- Large volume Ecofunnels (reusable or disposable)
- Absorption pads
- Cytocentrifugation slides

Easy and safe handling

- Convenient preparation
- Slide clips applicable to reusable and disposable funnels
- Slide label readable at any time
- Indication of the RCF during centrifugation

Accessories CS Centrifuge I & II

Cytologyfunnel reusable	#39910000 (12 pcs.)
Cytologyfunnel disposable	#39910004 (100 pcs.) #39910005 (500 pcs.)
Filtercards for Cytologyfunnel reusable	#39910001 Standard (200 pcs.)
for samples less 0.4 ml (200 pcs.)	#39910006 Thin
Cellslides Single circle uncoated	#39910002 (100 pcs.)
Cellslides Single circle coated	#39910003 (100 pcs.)
Double Cytologyfunnel reusable	#39910010 (12 pcs.)
Double Cytologyfunnel disposable, offset	#39910014 (100 pcs.) #39910015 (500 pcs.)
Filtercards for Double Cytologyfunnel reusable	#39910011 (500 pcs.)
Cellslides Double circle uncoated	#39910012 (100 pcs.)
Cellslides Double circle coated	#39910013 (100 pcs.)
Cellslides Double circle, offset	#39910016 (100 pcs.)
Only for Double Cytologyfunnel disposable !	
ECOfunnel reusable	#39910020 (12 pcs.)
ECOfunnel disposable, offset	#39910023 (100 pcs.) #39910024 (500 pcs.)
ECOseal for ECOfunnel	#39910021 (100 pcs.)
ECOSlides coated	#39910022 (100 Pcs.)
Cellclip for Cellcliprotor	#39910031 (1 pcs.)

Specifications	CS Centrifuge I	CS Centrifuge II
Cytologyfunnel capacity	Single 0.5 ml per chamber Double 0.5 ml per chamber ECOfunnel 5 ml per chamber	
Rotor slide capacity	Up to 12	
Applicable rotors	Cellcliprotor (cytocentrifugation) Swing-out rotors (Different sizes) Fixed angle rotors (Different sizes)	
Centrifuge operation	Up to 6,000 rpm, programmable, Timer 0 – 99 min.	Up to 15,000 rpm, programmable, Timer 0 – 99 min. Selectable deceleration speeds Program memory (10 progr.) Refrigeration to -20 °C (optional)
Dimensions (H x W x D)	257 x 366 x 430 mm	346 x 395 x 520 mm
Weight	24 kg	29 kg (without cooling)
Electrical parameters	200 – 240 V, 50 – 60 Hz	200 – 240 V, 50 – 60 Hz
Safety	Automatic rotor recognition Lid locking and holding IEC 1010 conform	Automatic rotor recognition Lid locking and holding Imbalance switch-off Motor overheating protection IEC 1010 conform



*CS Centrifuge I
with open hood*



Cellclip



Open cellcliprotor



Closed cellcliprotor

Standard components	CS Centrifuge I Open rotor	CS Centrifuge I Closed rotor	CS Centrifuge II Open rotor	CS Centrifuge II Closed rotor
Basic instrument	■	■	■	■
Operation manual	■	■	■	■
Cellcliprotor, open (12 positions)	■		■	
Cellcliprotor, closed (12 positions)		■		■
12x Cellclip (stainless steel)	■	■	■	■
12x Cytologyfunnel reusable	■	■	■	■
Filter cards for Cytologyfunnel reusable #39910001 Standard (200 St.)	■	■	■	■
Mains cable	■	■	■	■

CS Centrifuge I Open rotor	Art. No. #15500000
CS Centrifuge I Closed rotor	Art. No. #15500001

CS Centrifuge II Open rotor, optional cooling unit	Art. No. #15500100
CS Centrifuge II Closed rotor, optional cooling unit	Art. No. #15500101

Service

SLEE medical strives to provide first class care and support to its customers across the globe. We offer reliable and fast field service. Service calls outside Germany should be directed through your local SLEE medical distributor. In order to process your inquiries in time, please always include the following information:

- User name
- Address
- Phone number
- E-mail
- Instrument type
- Instrument serial number
- Purchase date
- Detailed case description

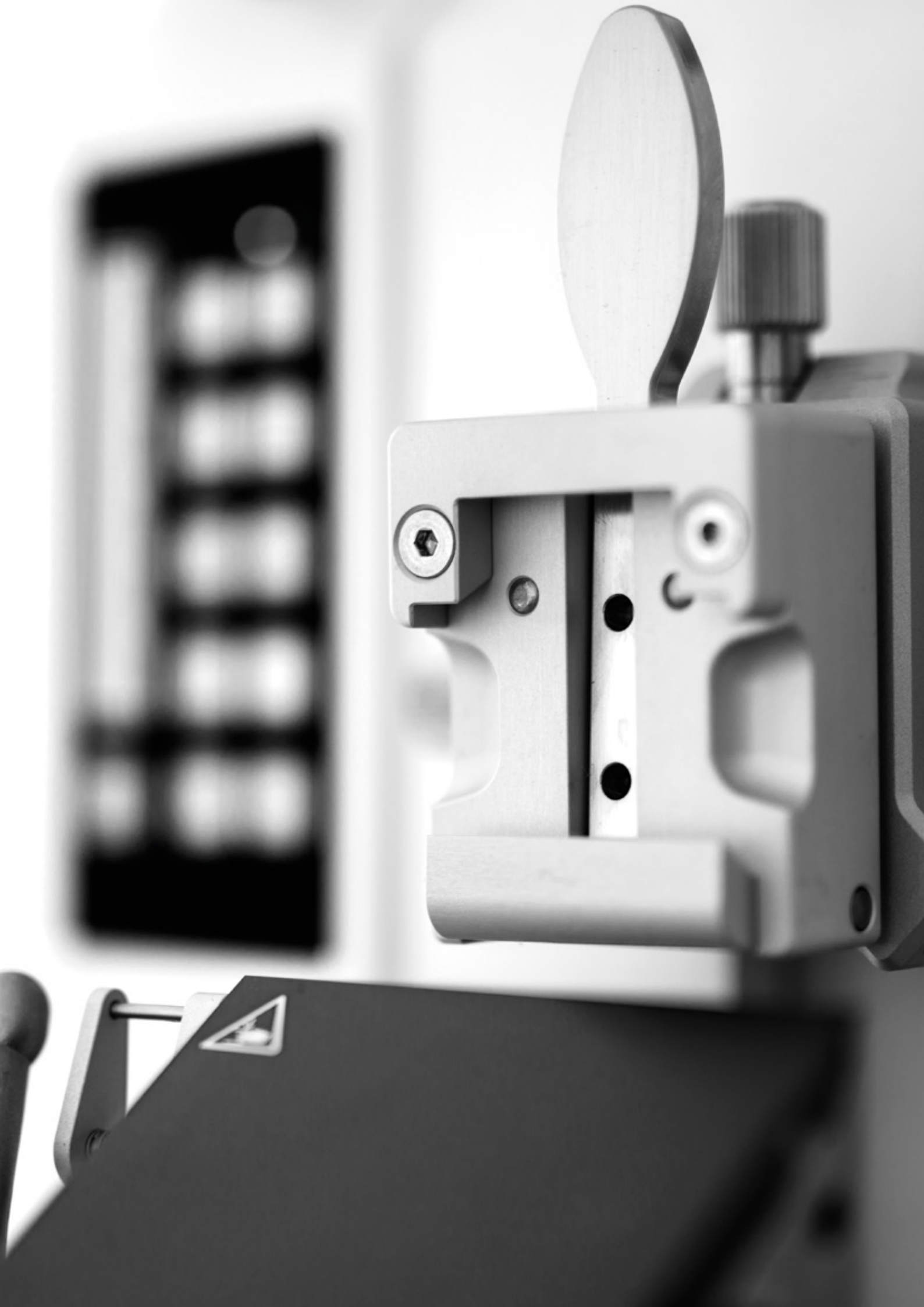
Service Hotline **+49 6131 95871-0**
Service E-mail **service@slee.de**

Service and application training

Well trained staff is prerequisite for timely service and high quality. SLEE therefore offers frequently service and application trainings. Visit www.slee.de to access the training schedule and download the registration form.

Training registration

Tel. +49 6131 95871-0
Fax +49 6131 96871-722
E-mail mail@slee.de



SLEE medical GmbH

Lise-Meitner-Strasse 11
55129 Mainz · Germany

Tel. +49 6131 95871-0
Fax +49 6131 95871-722

mail@slee.de
www.slee.de

